



Your Logo

46 Bramble Close
Guide Price £230,000

🛏️ 2 🚿 1 🚻 1



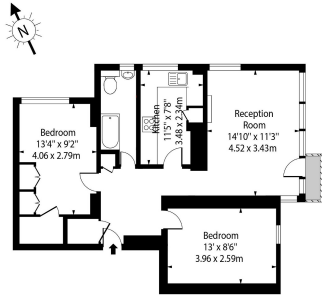
This meticulously maintained apartment provides a comfortable living experience with two generously sized double bedrooms. Situated on the second floor, it offers stunning views and superb public transport connections, ensuring easy and stress-free commutes to Croydon and the City. It's a perfect opportunity for a buy-to-let investor.

The apartment features a cozy living room with tasteful decor, a modern and well-kept kitchen, two double bedrooms with ample wardrobe space, and a fully tiled bathroom suite with a bathtub. This property promises a high standard of living.

Ideal for first-time buyers looking to enter the property market, it is also an excellent addition for buy-to-let investors seeking to expand their rental portfolio.



Bramble Close, Croydon, CR0



Approx Gross Internal Area 697 Sq Ft - 64.75 Sq M

Measured in accordance with RICS guidelines. Every attempt is made to ensure accuracy However all measurements are approximate. The floor plan is illustrative purposes only and is not to scale. www.energysage.co.uk

- Close to transport
- Excellent decor
- 2 double bedrooms
- Leasehold
- Close to many local amenities
- Many local schools

